

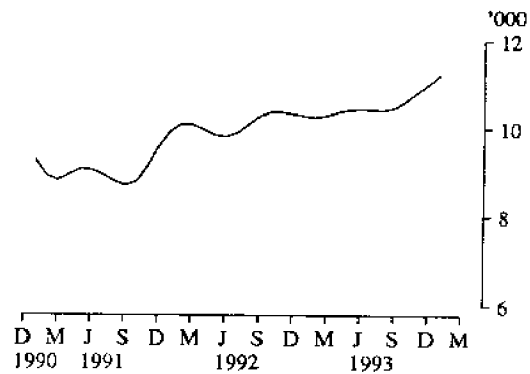
CATALOGUE NUMBER 9303.2
25 FEBRUARY 1994

MOTOR VEHICLE REGISTRATIONS, VICTORIA, JANUARY 1994

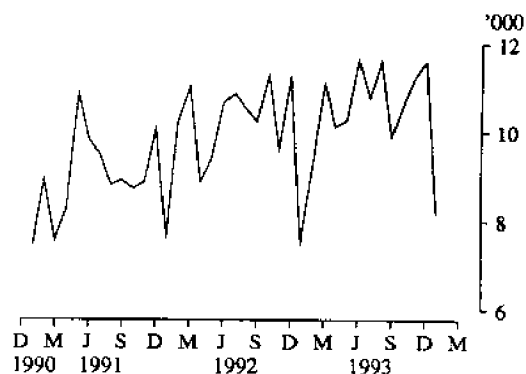
MAIN FEATURES

- Trend estimates of the number of new motor vehicles registered during January 1994 (11,219) showed a 1.8 per cent increase over the figure for December 1993 (11,021) and a 9.1 per cent increase over the figure for January 1993 (10,286). This is the sixth consecutive monthly increase in the revised series.
- In original terms the number of new motor vehicles registered during January 1994 (8,174) was 29.6 per cent lower than the previous month (11,608) and 8.5 per cent higher than January 1993 (7,534).
- For the 7 months ended January 1994 there were 64,028 new passenger vehicles registered, which was 4.2 per cent higher than the 61,473 registered during the 7 months ended January 1993.

NEW MOTOR VEHICLE REGISTRATIONS
TREND ESTIMATES



NEW MOTOR VEHICLE REGISTRATIONS
ORIGINAL



For further information about statistics in this publication and the availability of related unpublished statistics, contact Denis Ward or Leon Kinnersly on Melbourne (03) 615 7000; or any ABS State office.

INQUIRIES

For information about other ABS statistics and services contact Information Services on Melbourne (03) 615 7000; or any ABS State office.

TABLE 1. MOTOR VEHICLES ON REGISTER(a), VICTORIA
(^{'000})

As at 30 June	Passenger vehicles	Light commercial vehicles	Trucks			Buses	Total	Motor cycles
			Rigid	Artic- ulated	Non- freight carrying			
1988	2,064.7	196.9	201.7	13.8	13.7	14.3	2,505.1	70.1
1989	2,076.2	195.7	206.5	13.1	11.7	13.9	2,517.1	68.1
1990	2,137.8	194.8	210.7	14.2	13.0	13.8	2,584.3	67.9
1991	2,226.5	349.2	87.0	14.6	11.3	14.4	2,702.9	72.2
1992	2,178.1	322.5	73.0	14.3	11.4	15.6	2,614.9	69.9
1993	2,206.6	324.9	74.2	14.6	11.7	15.9	2,648.0	70.4

(a) See Explanatory notes, paragraphs 3 to 9.

TABLE 2. NEW MOTOR VEHICLES REGISTERED(a), VICTORIA

Period	Passenger vehicles	Light commercial vehicles	Trucks			Buses	Total	Motor cycles
			Rigid	Artic- ulated	Non- freight carrying			
1990-91 (b)	108,444	9,300	6,885	551	268	566	126,014	4,502
1991-92	98,766	11,080	1,832	406	184	649	112,917	3,878
1992-93	106,215	14,134	2,009	571	166	795	123,890	4,528
1992-93 —								
November	8,228	1,106	146	47	16	60	9,603	379
December	9,744	1,228	197	46	14	78	11,307	423
January	6,465	866	113	30	7	53	7,534	419
February	8,019	1,003	120	43	2	47	9,234	379
March	9,647	1,221	166	33	17	49	11,133	403
April	8,708	1,093	169	62	15	73	10,120	382
May	8,741	1,229	177	52	13	74	10,286	339
June	9,627	1,643	181	83	8	118	11,660	332
1993-94 —								
July	9,361	1,120	160	70	11	62	10,784	316
August	10,192	1,117	179	70	18	46	11,622	325
September	8,440	1,164	172	68	10	40	9,894	347
October	9,222	1,099	172	78	10	48	10,629	356
November	9,660	1,286	168	82	7	45	11,248	404
December	10,005	1,264	196	86	14	43	11,608	411
January	7,148	805	111	49	6	55	8,174	411
1992-93 —								
July — January	61,473	7,945	1,196	298	111	434	71,457	2,693
1993-94 —								
July — January	64,028	7,855	1,158	503	76	339	73,959	2,570

(a) See Explanatory notes, paragraphs 3 to 9. (b) Data compiled via the new processing system since December 1990, see Explanatory notes, paragraphs 1, 10 and 11.

TABLE 3. NEW MOTOR VEHICLES REGISTERED VICTORIA(a), ORIGINAL AND SEASONALLY ADJUSTED

Period	Passenger vehicles		Other vehicles(b)		Total(b) (c)		
	Original	Seasonally adjusted	Original	Seasonally adjusted	Original	Seasonally adjusted	Trend estimate(d)
MELBOURNE STATISTICAL DIVISION							
1992-93 —							
November	6,516	6,786	861	909	7,377	7,695	7,865
December	7,623	7,001	905	926	8,528	7,927	7,822
January	5,131	6,924	651	927	5,782	7,851	7,800
February	6,306	6,754	758	835	7,064	7,589	7,790
March	7,461	6,713	864	784	8,325	7,498	7,829
April	6,911	7,432	845	861	7,756	8,294	7,894
May	6,851	7,192	904	826	7,755	8,017	7,962
June	7,555	6,918	1,117	1,029	8,672	7,947	7,992
1993-94 —							
July	7,366	7,103	826	736	8,192	7,839	7,989
August	8,111	7,752	831	815	8,942	8,567	7,981
September	6,786	6,405	909	868	7,695	7,273	8,012
October	7,364	7,285	855	877	8,219	8,162	8,110
November	7,672	7,540	934	942	8,606	8,482	8,248
December	7,885	7,143	981	994	8,866	8,137	8,399
January	5,628	8,067	601	856	6,229	8,923	8,547
1992-93 —							
July — January	48,489	48,467	6,162	6,324	54,651	54,791	54,500
1993-94 —							
July — January	50,812	51,294	5,937	6,088	56,749	57,383	57,286
TOTAL VICTORIA							
1992-93 —							
November	8,228	8,503	1,375	1,486	9,603	9,989	10,372
December	9,744	8,921	1,563	1,636	11,307	10,557	10,326
January	6,465	8,866	1,069	1,522	7,534	10,388	10,286
February	8,019	8,586	1,215	1,319	9,234	9,905	10,259
March	9,647	8,703	1,486	1,328	11,133	10,031	10,297
April	8,708	9,328	1,412	1,420	10,120	10,749	10,367
May	8,741	8,981	1,545	1,429	10,286	10,410	10,429
June	9,627	8,793	2,033	1,791	11,660	10,584	10,440
1993-94 —							
July	9,361	8,958	1,423	1,272	10,784	10,230	10,428
August	10,192	9,688	1,430	1,397	11,622	11,085	10,424
September	8,440	8,017	1,454	1,420	9,894	9,436	10,483
October	9,222	9,240	1,407	1,457	10,629	10,698	10,629
November	9,660	9,585	1,588	1,657	11,248	11,242	10,821
December	10,005	9,202	1,603	1,647	11,608	10,849	11,021
January	7,148	10,026	1,026	1,454	8,174	11,480	11,219
1992-93 —							
July — January	61,473	61,697	9,984	10,357	71,457	72,054	71,642
1993-94 —							
July — January	64,028	64,716	9,931	10,303	73,959	75,020	75,025

(a) See Explanatory notes, paragraphs 3 to 9. (b) Excludes motor cycles, tractors, plant and equipment, caravans and trailers. (c) See paragraph 2 of the Explanatory notes. (d) Trend estimate (smoothed seasonally adjusted) series are revised as additional observations become available. See paragraph 11 of the Explanatory notes.

**TABLE 4. MAKES OF NEW PASSENGER VEHICLES REGISTERED(a), VICTORIA,
JANUARY 1994**

<i>Make</i>	<i>Vehicle tare weight (kilograms)</i>						<i>Total</i>	<i>Per cent</i>	<i>M.S.D.</i>
	<i>Up to 900</i>	<i>901 to 1,100</i>	<i>1,101 to 1,300</i>	<i>1,301 to 1,500</i>	<i>Over 1,500</i>	<i>Not stated</i>			
Ford	119	340	95	733	202	-	1,489	20.8	1,077
Holden	130	35	291	467	23	-	946	13.2	714
Honda	6	212	216	26	4	-	464	6.5	409
Hyundai	5	257	34	1	-	-	297	4.2	222
Mazda	102	117	133	3	14	-	369	5.2	323
Mitsubishi	136	99	182	752	144	-	1,313	18.4	1,049
Nissan	-	156	90	41	126	-	413	5.8	323
Toyota	16	321	304	195	248	-	1,084	15.2	841
Other makes	108	127	245	177	116	-	773	10.8	670
Total	622	1,664	1,590	2,395	877	-	7,148	100.0	5,628

(a) See Explanatory notes, paragraphs 3 to 9.

**TABLE 5. MAKES OF NEW LIGHT COMMERCIAL VEHICLES REGISTERED(a),
VICTORIA, JANUARY 1994**

<i>Make</i>	<i>Vehicle tare weight (kilograms)</i>						<i>Total</i>	<i>Per cent</i>	<i>M.S.D.</i>
	<i>Up to 900</i>	<i>901 to 1,100</i>	<i>1,101 to 1,300</i>	<i>1,301 to 1,500</i>	<i>Over 1,500</i>	<i>Not stated</i>			
Ford	-	-	41	139	23	-	203	25.2	133
Holden	-	-	35	46	35	-	116	14.4	64
Mazda	-	-	15	28	18	1	62	7.7	38
Mitsubishi	-	-	77	6	15	1	99	12.3	76
Nissan	-	-	11	41	37	-	89	11.1	41
Toyota	-	-	59	95	61	-	215	26.7	113
Other makes	3	10	-	1	7	-	21	2.6	9
Total	3	10	238	356	196	2	805	100.0	474

(a) See Explanatory notes, paragraphs 3 to 9.

**TABLE 6. MAKES OF NEW RIGID TRUCKS REGISTERED(a), VICTORIA,
JANUARY 1994**

<i>Make</i>	<i>Gross vehicle mass (tonnes) (b)</i>							<i>Total</i>	<i>Per cent</i>	<i>M.S.D.</i>	
	<i>Up to 4</i>	<i>4.001 to 8</i>	<i>8.001 to 12</i>	<i>12.001 to 16</i>	<i>16.001 to 20</i>	<i>20.001 to 30</i>	<i>Over 30</i>				
Ford	-	3	3	-	-	-	1	-	7	6.3	5
Hino	-	-	-	4	3	2	1	-	10	9.0	9
International	-	-	-	3	2	-	2	-	7	6.3	6
Isuzu	-	-	5	14	2	2	-	-	23	20.7	15
Mazda	-	-	8	11	-	-	-	-	19	17.1	19
Mitsubishi	-	-	7	7	2	-	-	-	16	14.4	6
Nissan	-	-	1	1	2	1	-	-	5	4.5	1
Toyota	-	3	9	1	-	-	-	-	13	11.7	8
Other makes	1	2	1	2	2	2	1	-	11	9.9	7
Total	1	8	34	43	13	7	5	-	111	100.0	76

(a) See Explanatory notes, paragraphs 3 to 9. (b) Gross vehicle mass is the maximum permissible weight of the loaded vehicle.

TABLE 7. MAKES OF NEW ARTICULATED TRUCKS REGISTERED(a), VICTORIA, JANUARY 1994

Make	Gross combination mass (tonnes) (b)							Not stated	Total	Per cent	M.S.D.
	Up to 16	16.001 to 20	20.001 to 24	24.001 to 30	30.001 to 34	34.001 to 40	Over 40				
Ford	1	1	-	-	-	1	1	-	4	8.2	1
International	4	3	3	3	-	-	3	-	16	32.7	2
Kenworth	-	3	5	-	-	-	1	-	9	18.4	3
Mack	-	3	1	1	-	-	-	-	5	10.2	3
Mercedes-Benz	-	-	-	-	-	-	-	-	-	-	-
Scania	-	2	-	-	-	-	-	2	4	8.2	2
Volvo	-	1	-	-	-	-	1	1	3	6.1	2
Western Star	-	2	-	-	-	-	2	-	4	8.2	1
Other makes	-	2	2	-	-	-	-	-	4	8.2	1
Total	5	17	11	4	-	1	8	3	49	100.0	15

(a) See Explanatory notes, paragraphs 3 to 9. (b) Gross combination mass is the maximum permissible weight of the prime mover plus attached loaded trailer.

TABLE 8. MAKES OF NEW NON-FREIGHT CARRYING TRUCKS AND BUSES REGISTERED(a), VICTORIA, JANUARY 1994

Make	Non-freight carrying trucks				Buses			
	M.S.D.	Rest of Victoria	Total	Per cent	M.S.D.	Rest of Victoria	Total	Per cent
Ford	2	-	2	33.3	-	-	-	-
Hino	-	-	-	-	2	9	11	20.0
Isuzu	-	-	-	-	-	-	-	-
Mazda	1	-	1	16.7	6	-	6	10.9
Mercedes-Benz	-	-	-	-	-	5	5	9.1
Mitsubishi	1	-	1	16.7	-	-	-	-
Nissan	1	-	1	16.7	-	-	-	-
Scania	1	-	1	16.7	3	-	3	5.5
Toyota	-	-	-	-	18	11	29	52.7
Other makes	-	-	-	-	1	-	1	1.8
Total	6	-	6	100.0	30	25	55	100.0

(a) See Explanatory notes, paragraphs 3 to 9.

TABLE 9. NEW MOTOR CYCLES REGISTERED, VICTORIA, JANUARY 1994

Make	Cubic capacity of engine (cc)						Not stated	Total	Per cent	M.S.D.
	Up to 50	51 to 150	151 to 250	251 to 500	501 to 750	Over 750				
Harley Davidson	-	1	-	-	-	65	-	66	16.1	50
Honda	1	64	22	-	43	8	-	138	33.6	101
Kawasaki	-	-	36	-	23	19	-	78	19.0	50
Suzuki	1	-	27	2	9	4	-	43	10.5	27
Yamaha	-	6	24	2	6	10	-	48	11.7	12
Other makes	-	-	1	4	3	30	-	38	9.2	26
Total	2	71	110	8	84	136	-	411	100.0	266

TABLE 10. NEW MOTOR VEHICLES REGISTERED(a), BY NUMBER OF CYLINDERS, VICTORIA, JANUARY 1994

Number of cylinders	Passenger vehicles	Light commercial vehicles	Trucks			Buses	Total	Per cent
			Rigid	Articulated	Non-freight carrying			
Four	4,206	561	63	2	2	23	4,857	59.4
Six	2,666	224	47	44	3	32	3,016	36.9
Eight	140	10	1	3	1	-	155	1.9
Other	67	5	-	-	-	-	72	0.9
Not stated	69	5	-	-	-	-	74	0.9
Total	7,148	805	111	49	6	55	8,174	100.0

(a) See Explanatory notes, paragraphs 3 to 9.

TABLE 11. NEW PLANT AND EQUIPMENT, CARAVANS, AND TRAILERS REGISTERED, JANUARY 1994

Type	M.S.D.	Rest of Victoria	Total
Mobile plant, equipment, etc.	34	32	66
Caravans	34	48	82
Trailers	450	444	894
Total	518	524	1,042

TABLE 12. PROPORTION OF NEW MOTOR VEHICLES REPORTED FOR REGISTRATION RELATING TO THE REFERENCE MONTH

Statistics of new motor vehicle registrations refer to the number of registrations processed by the Victorian Roads Corporation. Due to backlogs in processing new registrations and variations in the rate of processing, caution should be exercised when interpreting month to month movements in the original and seasonally adjusted series.

The following table indicates the proportion of total new motor vehicle registrations reported each month by the Roads Corporation that relate to the reference month; in January 1994 the proportion of "current" records was 99 per cent, with 1 per cent relating to earlier periods.

Publication month	Earlier months	Reference month					January	Total
		August	September	October	November	December		
		(per cent)						
August 1993	1	99	-	-	-	-	-	100
September 1993	-	1	99	-	-	-	-	100
October 1993	-	-	2	98	-	-	-	100
November 1993	-	-	-	1	99	-	-	100
December 1993	-	-	-	-	2	98	-	100
January 1994	-	-	-	-	-	-	99	100

EXPLANATORY NOTES

Introduction

This publication contains detailed information regarding registrations of new motor vehicles and includes particulars of passenger vehicles and light commercial vehicles classified by make and tare, and rigid and articulated trucks by make and gross vehicle mass/gross combination mass. Details of registrations of non-freight carrying trucks, buses, motor cycles, trailers, caravans, and plant and equipment are also included, as are particulars of motor vehicles on register.

Scope and coverage

2. Motor vehicle registration statistics are obtained from data made available by the Roads Corporation (formerly the Road Traffic Authority of Victoria) and reflect the information as recorded in registration documents. In these statistics, registrations mean registrations processed by the Roads Corporation during the period. In Victoria, registrations are not processed by the Roads Corporation until some time after the actual date of registration; for this reason, a number of registrations processed in a given month actually relate to vehicles registered prior to that month. During January 1994 the proportion of registrations processed by the Victorian Roads Corporation that relate to the reference month was 99 per cent, with the remaining 1 per cent relating to earlier periods.

The statistics include vehicles with diplomatic and consular plates and government-owned vehicles other than those belonging to the defence services.

Although registration of recreation vehicles intended for use in public places other than roads is compulsory, particulars of such vehicles are excluded from statistics contained in this publication.

Recent changes in processing procedures implemented by the Roads Corporation may impact on statistics contained in this publication. Care should therefore be taken when using these statistics.

Classification of vehicles

3. The decoding of the Vehicle Identification Number (VIN) has resulted in better identification of each vehicle's bodycode and consequently classification of vehicles to particular categories. Vehicles such as minibuses which, in the old system, had been classified to cars and station wagons in some States but to buses in other States, are now consistently classified. Similarly, in the old system utilities and cab-chasses, which were sometimes classified to small trucks, are now consistently classified to utilities. In addition, duplicate records, out of scope vehicles and those vehicles not registered for the first time can now be more accurately identified and therefore excluded from the statistics.

Vehicle Type Definitions

4. *Passenger Vehicles.* Vehicles constructed primarily for the carriage of less than 10 passengers (including the driver). Included are cars, station wagons, 4WD passenger vehicles and forward control passenger vehicles.

5. *Light Commercial Vehicles.* Vehicles constructed primarily for the carriage of goods and do not exceed 3.5 tonnes gross vehicle mass (GVM). Included are utilities, panel vans, cab-chassis and forward control vehicles (whether 4WD or not).

6. *Rigid Trucks.* Vehicles constructed primarily for load carrying with gross vehicle mass (GVM) exceeding 3.5 tonnes. Included are normal rigid trucks with a tow bar, draw bar or other non-articulated coupling on the rear for use with a trailer or dolly.

7. *Articulated Trucks.* Vehicles constructed primarily for load carrying consisting of a prime mover having no significant load carrying area but with a turn table device which can be linked to a trailer. The gross combination mass (GCM) will exceed 3.5 tonnes with or without a trailer.

8. *Non-freight Carrying Trucks.* Includes specialist vehicles such as ambulances or mobile cranes or vehicles fitted with special purpose equipment and having no goods carrying capacity.

9. *Omnibuses.* Includes all passenger vehicles having more than nine seats, including the driver.

Seasonal adjustment

10. Original and seasonally adjusted registrations of new motor vehicles are shown in Table 3. The two component series 'Passenger vehicles' and 'Other vehicles' are each adjusted separately, and the adjusted figures for total registrations are obtained by adding together the two component series. In the seasonally adjusted series, account has been taken of normal seasonal factors and 'trading day' effects (arising from the varying numbers of Sundays, Mondays, Tuesdays, etc. in the month) and the effect of movement in the date of Easter which may, in successive years, affect figures for different months.

Seasonally adjusted statistics should not be regarded as in any way definitive. In interpreting particular seasonally adjusted statistics it is important to bear in mind the methods by which they have been derived and the limitations to which the methods used are subject.

Seasonal adjustment is a means of removing the

estimated effects of normal seasonal variation from the series so that the effects of other influences on the series may be more clearly recognised. Seasonal adjustment procedures do not aim to remove the irregular or non-seasonal influences which may be present in any particular months, such as the effect of introducing new models or of industrial disputes. Irregular influences that are highly volatile can make it difficult to interpret the movement of the series even after adjustment for seasonal variation.

11. The seasonally adjusted series can, however, be smoothed to reduce the impact of the irregular component in the adjusted series. This smoothed seasonally adjusted series is called a trend estimate. Trend estimates of motor vehicle registration statistics are shown in Table 3. The trend estimates have been derived by applying a 13-term Henderson-weighted moving average to the series.

While this technique enables smoothed data for the latest period to be produced, it does result in revisions to the smoothed series for the most recent months as additional observations become available. There may also be revisions as a result of changes in the original data, and as a result of the re-estimation of the seasonal factors.

Motor vehicles on register

12. Censuses of motor vehicles on register have been conducted in respect of 31 December 1955 and 1962, and 30 September 1971, 1976, 1979, 1982, 1985, 1988 and 1991. From December 1976, details of Commonwealth Government-owned vehicles on register are only available at 31 December each year.

For 30 June estimates, the previous 31 December figures for Commonwealth Government-owned vehicles are used. Motor vehicles on register at a given date are vehicles for which either fees were paid in advance, on that date, or retrospectively. Figures for motor vehicles on register prior to June 1982 were derived from estimates of the previous Census of Motor Vehicles. From June 1982 onwards, motor vehicles on register figures have been collected from the Roads Corporation.

Unpublished tables

13. Various tabulations of a more detailed nature than those contained in this publication are available in the form of computer printouts for inspection in this Office. It is recommended that inquiries regarding the availability of unpublished statistics be made by telephoning in the first instance. In general a charge is made for supply of such tabulations.

Related publications

14. Users may also wish to refer to the following ABS publications which are available on request:

Registrations of New Motor Vehicles, Australia, Preliminary (9301.0) (monthly) (\$10.70)

Motor Vehicle Registrations, Australia (9303.0) (monthly) (\$10.70)

Motor Vehicle Registrations, Australia (9304.0) (annual) (\$15.00)

Motor Vehicle Census, Australia (9309.0) (irregular)

Current publications produced by the ABS are listed in the *Catalogue of Publications, Australia* (1101.0). The ABS also issues, on Tuesdays and Fridays, a *Publications Advice* (1105.0) which lists publications to be released in the next few days. These are available from any ABS Office.

Electronic services

15. **DISCOVERY** Key *656# for selected current economic, social, and demographic statistics.

PC-AUSSTATS Thousands of up-to-date time series are available on this ABS on-line service. For further information phone (03) 615 7769.

PC-TELESTATS This service delivers major economic indicator publications ready to download into your computer on the day of release. Further information is available on (06) 252 5408.

Symbols and other usages

r figure or series revised since previous issue

- nil or rounded down to zero

M.S.D. Melbourne Statistical Division

n.a. not available

Where figures have been rounded, discrepancies may occur between sums of the component items and totals.

STUART JACKSON

Deputy Commonwealth Statistician

